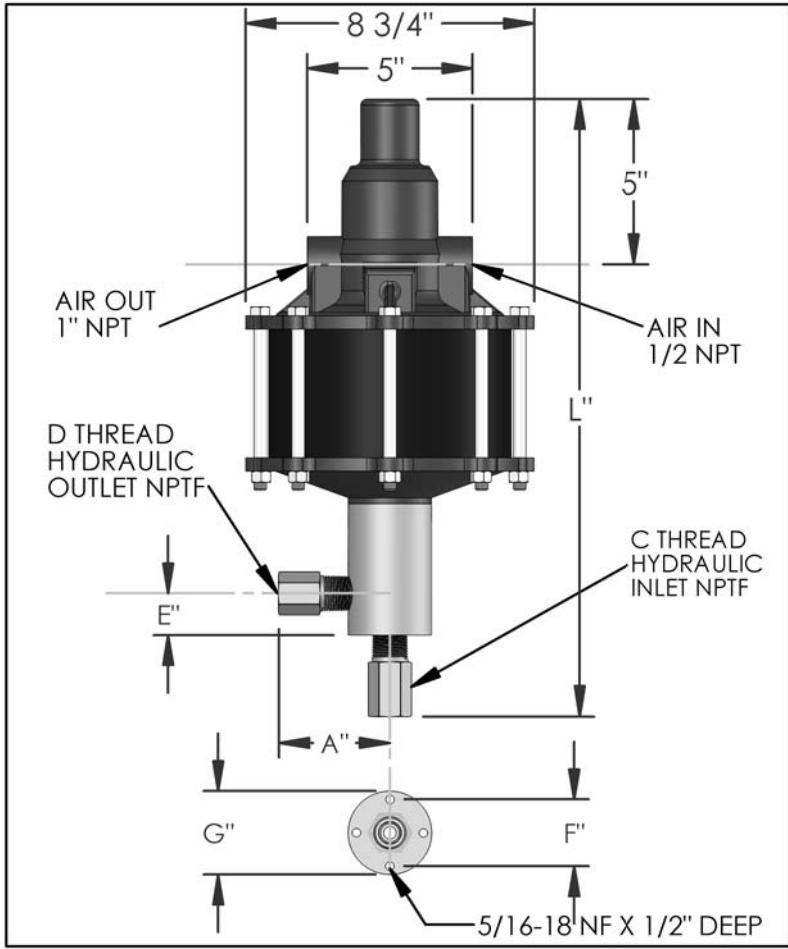


# PARTS LIST FOR AZ-2-97B

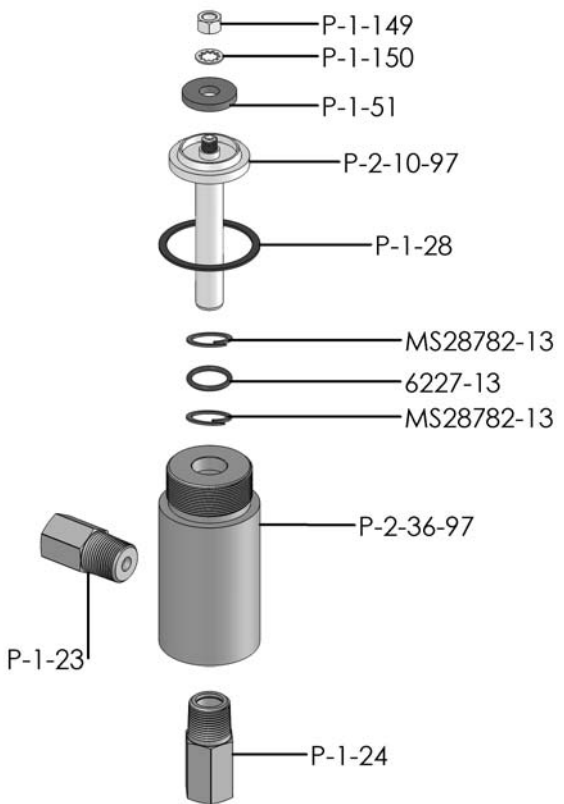


DIMENSIONS (ins./mm)							
L	A	B	C	D	E	F	G
18-1/2	3	N/A	1/2	1/2	1-1/4	2	2-1/2
470	76	N/A			32	51	64

HYD. PISTON DIA. (ins.)	0.688
HYD. PISTON AREA (ins.)	0.3718
VOLUME PER STROKE (ci.)	0.928

Pump may be mounted in any position. (vertical Preferred) if mounted in an inverted position, drill a 1/16" hole in head or install a drain cock to release any fluid that may accumulate.

AIR PRESSURE-PSI	10	20	30	40	50	60	70	80	90	100	110
HYDRAULIC PRESSURE-PSI	750	1,750	2,800	3,700	4,750	5,900	6,875	7,700	8,750	9,700	10,700



EXPLODED VIEW OF HYDRAULIC ASSEMBLY

AIR PSI		60	80	100
HYDRAULIC PRESSURE-PSI	0	201	220	238
	1,000	152	180	195
	1,250			
	1,500			
	2,000	131	159	175
	2,500			
	3,000	113	140	156
	3,500			
	4,000	92	122	139
	4,500			
	5,000	67	101	128
	6,000	0	82	112
7,000		51	98	
8,000		0	79	
9,000			46	
10,000			0	

APPROXIMATE RATE OF DISCHARGE-CIPM

# AZ-2 MODEL PUMP / PARTS LIST

## EXPLODED VIEW OF AIR MOTOR

P-2-113

