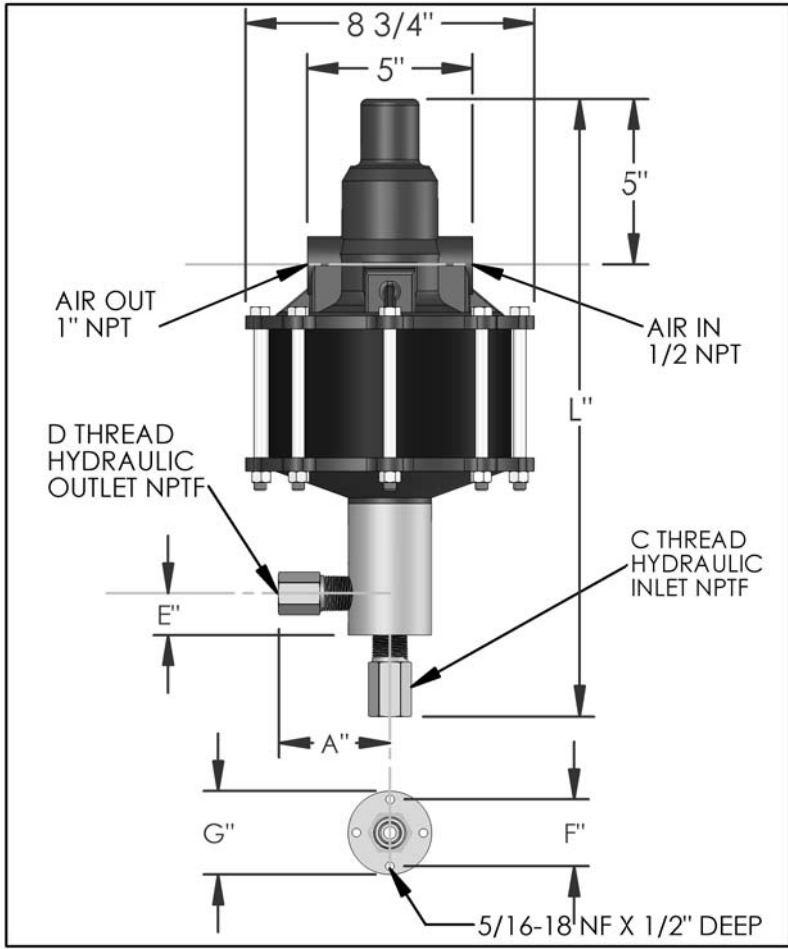


# PARTS LIST FOR AZ-2-60B

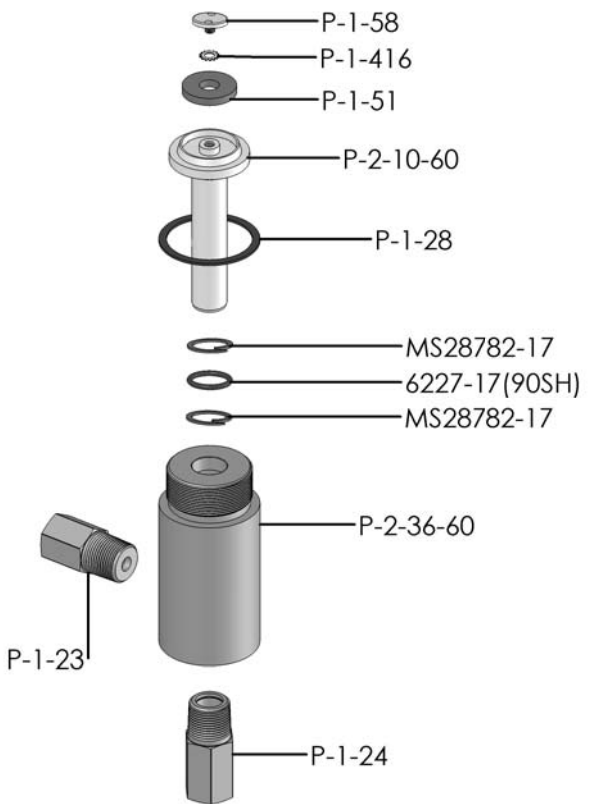


DIMENSIONS (ins./mm)							
L	A	B	C	D	E	F	G
18-1/2	3	N/A	1/2	1/2	1-1/4	2	2-1/2
470	76	N/A			32	51	64

HYD. PISTON DIA. (ins.)	.875
HYD. PISTON AREA (ins.)	0.6013
VOLUME PER STROKE (ci.)	1.5

Pump may be mounted in any position. (vertical Preferred) if mounted in an inverted position, drill a 1/16" hole in head or install a drain cock to release any fluid that may accumulate.

AIR PRESSURE-PSI	10	20	30	40	50	60	70	80	90	100	110
HYDRAULIC PRESSURE-PSI	450	1,050	1,700	2,275	2,900	3,500	4,100	4,650	5,200	6,000	6,600



EXPLODED VIEW OF HYDRAULIC ASSEMBLY

AIR PSI		60	80	100	APPROXIMATE RATE OF DISCHARGE-CIPM
HYDRAULIC PRESSURE-PSI	0	317	366	378	
	250				
	500				
	750				
	1,000	226	265	293	
	1,250				
	1,500				
	1,750				
	2,000	180	229	256	
	2,500				
	3,000	110	179	214	
	3,500	0	159	189	
	4,000		125	168	
	4,500		58	149	
	5,000		0	132	
	6,000			0	

# AZ-2 MODEL PUMP / PARTS LIST

## EXPLODED VIEW OF AIR MOTOR

P-2-113

