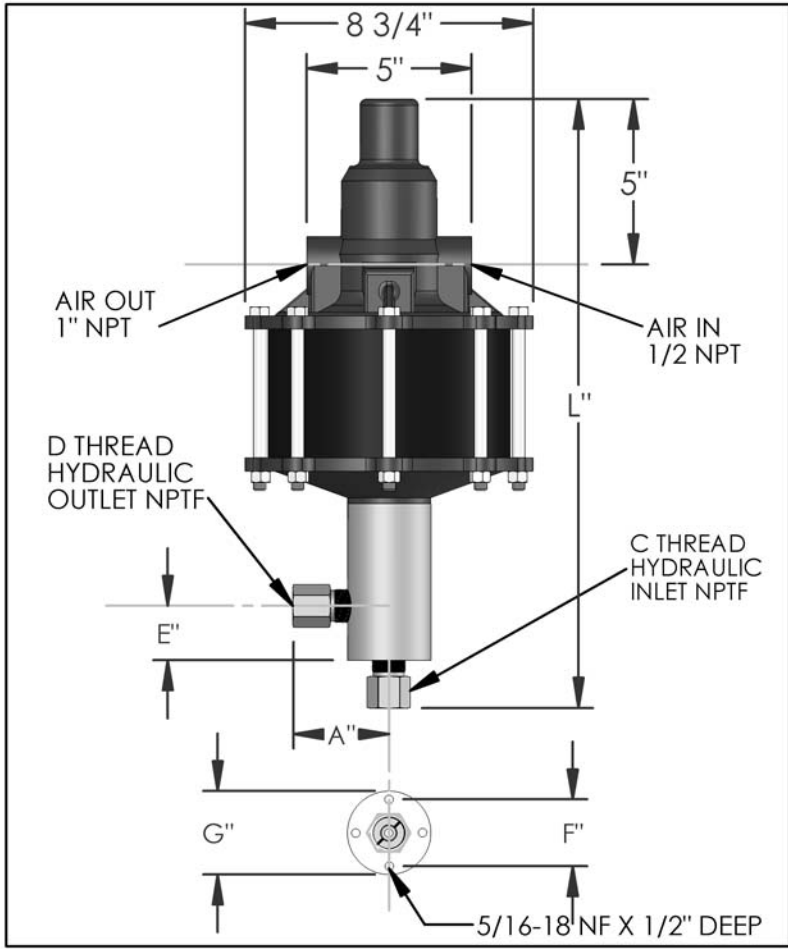


PARTS LIST FOR AZ-2-458B

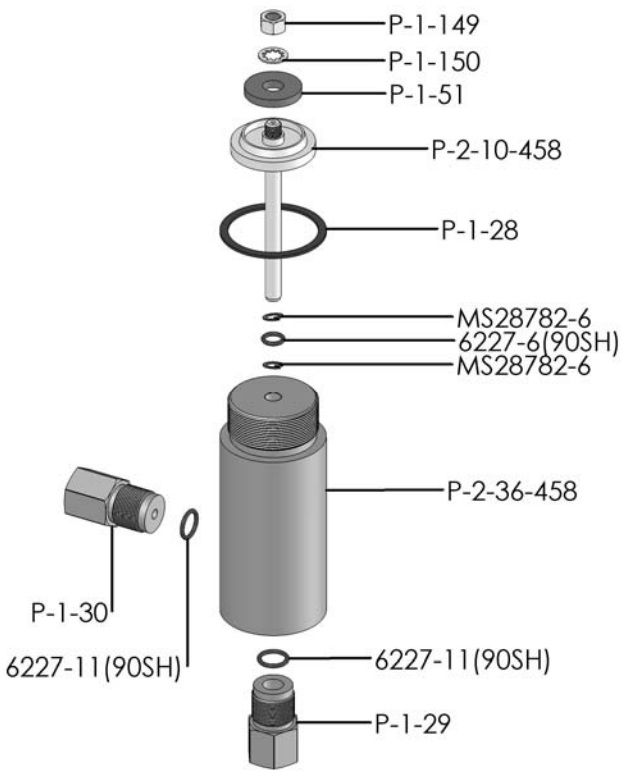


DIMENSIONS (ins./mm)							
L	A	B	C	D	E	F	G
17-13/16	2-1/2	N/A	3/8	3/8	1-5/8	1-3/4	2-1/2
452	64	N/A			41	44	64

HYD. PISTON DIA. (ins.)	0.313
HYD. PISTON AREA (ins.)	0.0769
VOLUME PER STROKE (ci.)	0.192

Pump may be mounted in any position. (vertical Preferred) if mounted in an inverted position, drill a 1/16" hole in head or install a drain cock to release any fluid that may accumulate.

AIR PRESSURE-PSI	10	20	30	40	50	60	70	80	90	100	110
HYDRAULIC PRESSURE-PSI	4,000	8,800	13,700	18,000	22,500	27,000	31,500	36,500	41,400	45,800	50,300



EXPLODED VIEW OF HYDRAULIC ASSEMBLY

AIR PSI		60	80	100	APPROXIMATE RATE OF DISCHARGE-CIPM
HYDRAULIC PRESSURE-PSI	0	40	43	46	
	4,000				
	4,500				
	5,000	34	38	40	
	6,000				
	7,000				
	8,000				
	9,000				
	10,000	28	33	35	
	12,500				
	15,000	24	29	31	
	20,000	21	24	27	
	25,000	14	21	24	
	30,000	0	16	21	
	40,000		0	14	
	50,000			0	

AZ-2 MODEL PUMP / PARTS LIST

EXPLODED VIEW OF AIR MOTOR

P-2-113

