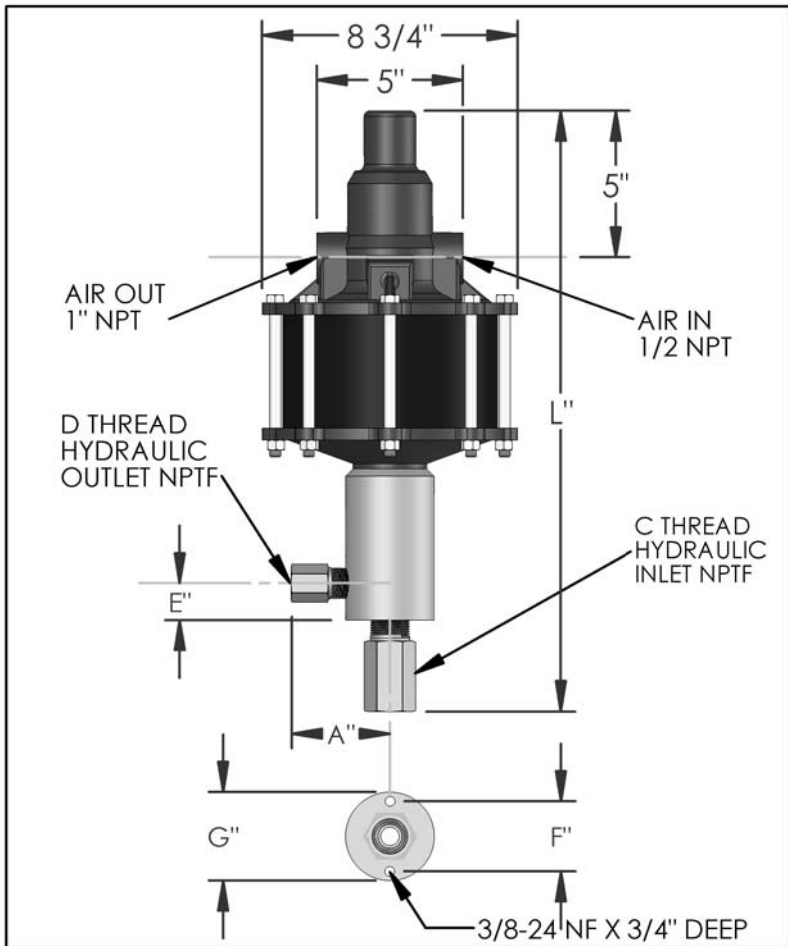


# PARTS LIST FOR AZ-2-36B

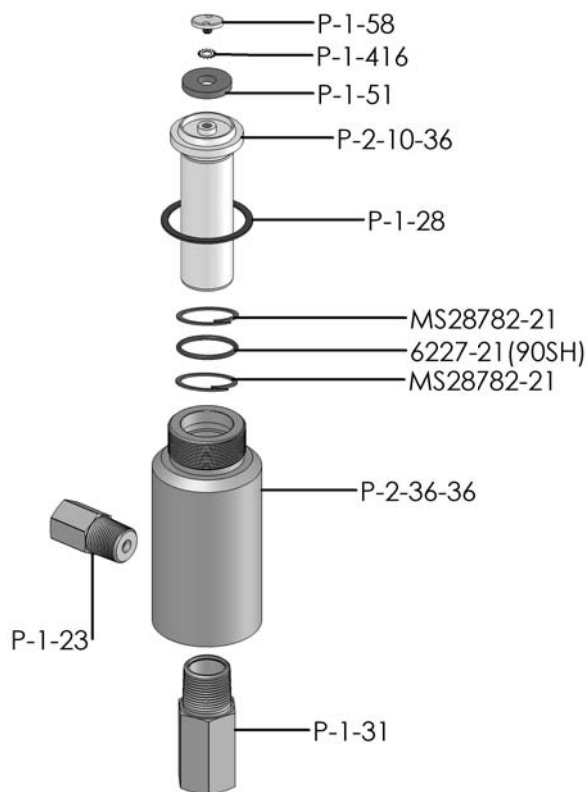


DIMENSIONS (ins./mm)							
L	A	B	C	D	E	F	G
20-9/16	3	N/A	1"	1/2	1-1/4	2-3/8	3
522	76	N/A			32	60	76

HYD. PISTON DIA. (ins.)	1.125
HYD. PISTON AREA (ins.)	0.994
VOLUME PER STROKE (ci.)	2.49

Pump may be mounted in any position. (vertical Preferred) if mounted in an inverted position, drill a 1/16" hole in head or install a drain cock to release any fluid that may accumulate.

AIR PRESSURE-PSI	10	20	30	40	50	60	70	80	90	100	110
HYDRAULIC PRESSURE-PSI	250	625	1,025	1,400	1,800	2,150	2,500	2,850	3,250	3,600	3,950



EXPLODED VIEW OF HYDRAULIC ASSEMBLY

AIR PSI		60	80	100	APPROXIMATE RATE OF DISCHARGE-CIPM
HYDRAULIC PRESSURE-PSI	0	500	573	622	
	250				
	500	409	464	525	
	750				
	1,000	336	411	445	
	1,250				
	1,500	253	329	381	
	1,750				
	2,000	131	277	332	
	2,500	0	188	273	
	3,000		0	200	
	3,500			45	
	4,000			0	
	4,500				
	5,000				
	6,000				

# AZ-2 MODEL PUMP / PARTS LIST

## EXPLODED VIEW OF AIR MOTOR

P-2-113

