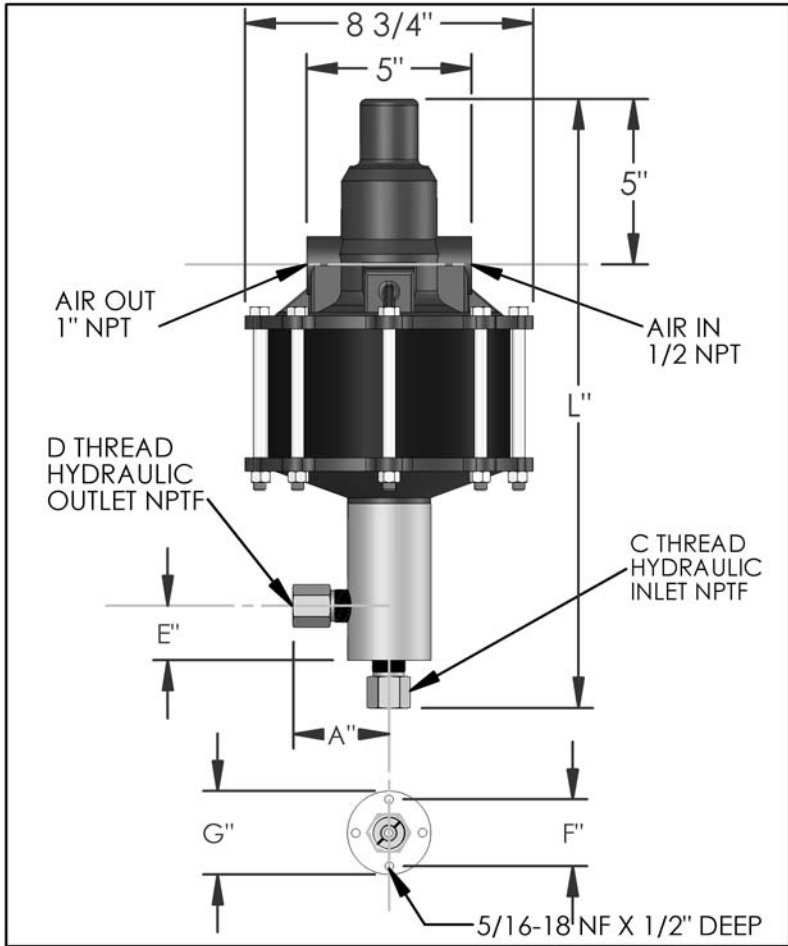


PARTS LIST FOR AZ-2-323B

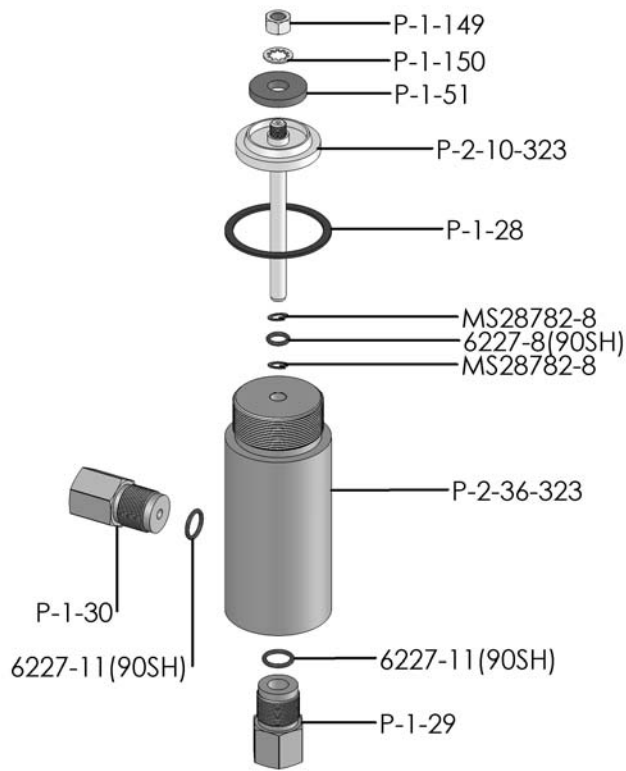


DIMENSIONS (ins./mm)							
L	A	B	C	D	E	F	G
17-13/16	2-1/2	N/A	3/8	3/8	1-5/8	1-3/4	2-1/2
452	64	N/A			41	44	64

HYD. PISTON DIA. (ins.)	0.375
HYD. PISTON AREA (ins.)	0.1104
VOLUME PER STROKE (ci.)	0.276

Pump may be mounted in any position. (vertical Preferred) if mounted in an inverted position, drill a 1/16" hole in head or install a drain cock to release any fluid that may accumulate.

AIR PRESSURE-PSI	10	20	30	40	50	60	70	80	90	100	110
HYDRAULIC PRESSURE-PSI	3,000	6,000	9,500	12,600	16,000	19,100	22,300	25,600	29,000	32,300	35,600



EXPLODED VIEW OF HYDRAULIC ASSEMBLY

HYDRAULIC PRESSURE-PSI	AIR PSI			APPROXIMATE RATE OF DISCHARGE-CIPM
	60	80	100	
0	61	65	70	
3,000	49	57	59	
4,000				
4,500				
5,000				
6,000	43	51	54	
7,000				
8,000				
9,000	38	46	49	
10,000				
12,500	31	40	44	
15,000	27	37	40	
20,000	0	30	34	
25,000		10	28	
30,000		0	14	
40,000			0	

AZ-2 MODEL PUMP / PARTS LIST

EXPLODED VIEW OF AIR MOTOR

P-2-113

