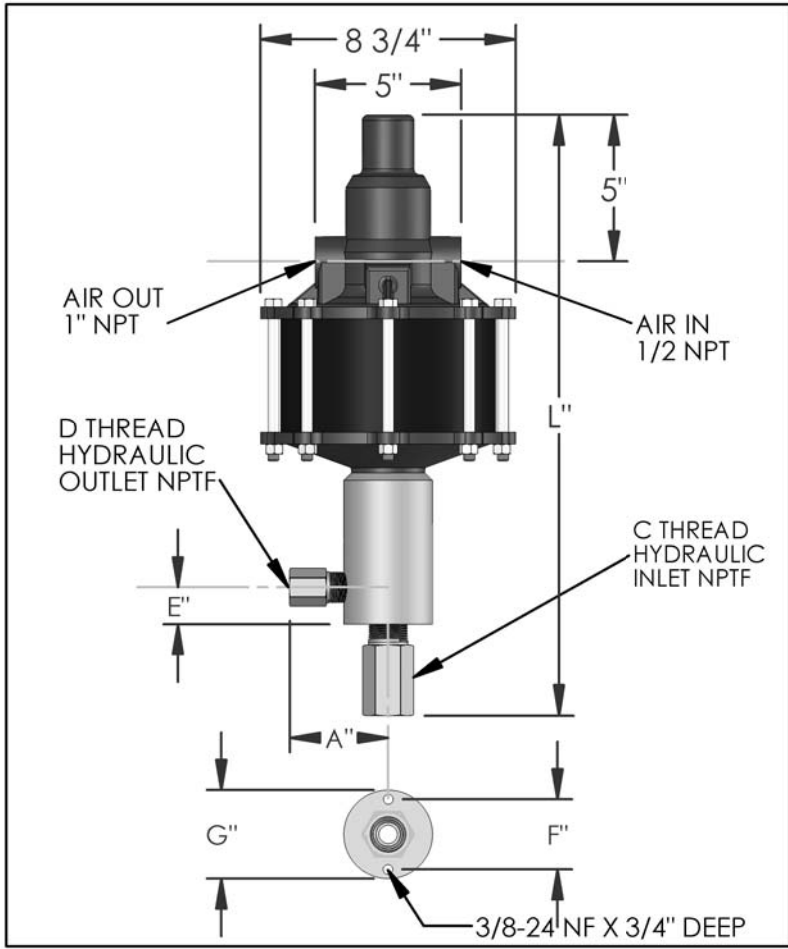


# PARTS LIST FOR AZ-2-27B

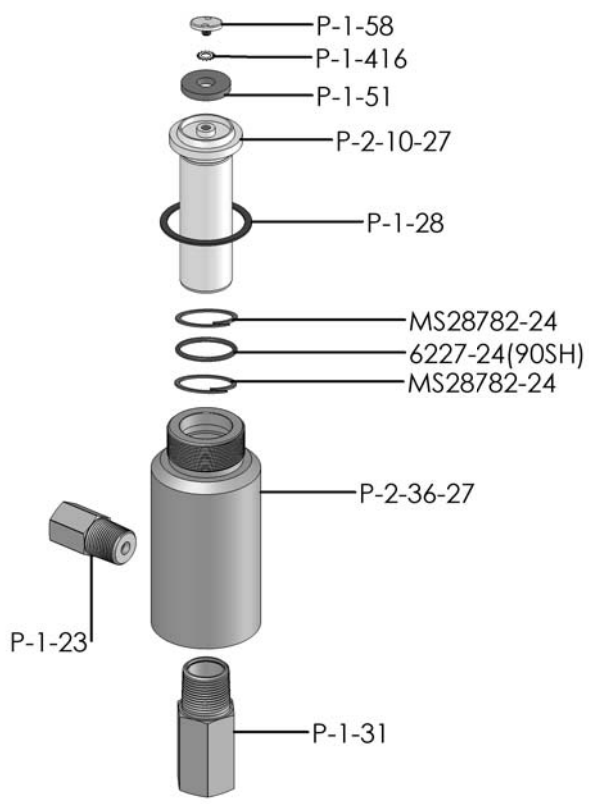


DIMENSIONS (ins./mm)							
L	A	B	C	D	E	F	G
20-9/16	3	N/A	1"	1/2	1-1/4	2-3/8	3
522	76	N/A			32	60	76

HYD. PISTON DIA. (ins.)	1.313
HYD. PISTON AREA (ins.)	1.354
VOLUME PER STROKE (ci.)	3.382

Pump may be mounted in any position. (vertical Preferred) if mounted in an inverted position, drill a 1/16" hole in head or install a drain cock to release any fluid that may accumulate.

AIR PRESSURE-PSI	10	20	30	40	50	60	70	80	90	100	110
HYDRAULIC PRESSURE-PSI	180	450	725	1,000	1,300	1,550	1,850	2,125	2,400	2,700	2,950



EXPLODED VIEW OF HYDRAULIC ASSEMBLY

AIR PSI		60	80	100
HYDRAULIC PRESSURE-PSI	0	708	769	817
	250			
	500	525	622	647
	750			
	1,000	397	488	549
	1,250			
	1,500	88	375	458
	1,750	0	289	409
	2,000		117	342
	2,500		0	169
	3,000			0
	3,500			
	4,000			
	4,500			
	5,000			
6,000				
APPROXIMATE RATE OF DISCHARGE-CIPM				