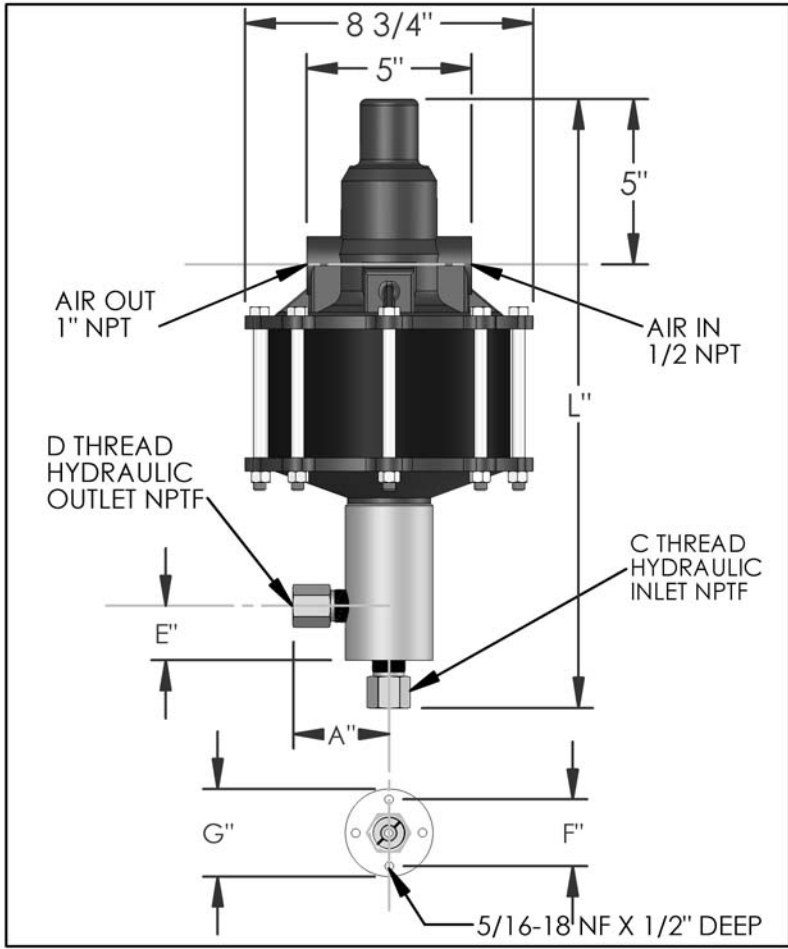


# PARTS LIST FOR AZ-2-237B

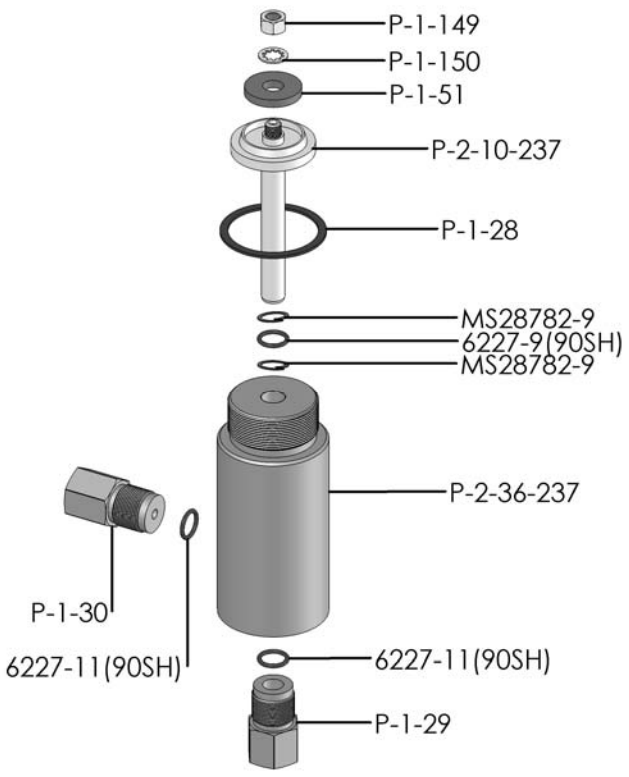


DIMENSIONS (ins./mm)							
L	A	B	C	D	E	F	G
17-13/16	2-1/2	N/A	3/8	3/8	1-5/8	1-3/4	2-1/2
452	64	N/A			41	44	64

HYD. PISTON DIA. (ins.)	0.438
HYD. PISTON AREA (ins.)	0.1507
VOLUME PER STROKE (ci.)	0.376

Pump may be mounted in any position. (vertical Preferred) if mounted in an inverted position, drill a 1/16" hole in head or install a drain cock to release any fluid that may accumulate.

AIR PRESSURE-PSI	10	20	30	40	50	60	70	80	90	100	110
HYDRAULIC PRESSURE-PSI	1,900	4,400	6,900	9,100	11,600	14,000	16,400	18,800	21,300	23,700	26,000



EXPLODED VIEW OF HYDRAULIC ASSEMBLY

AIR PSI		60	80	100	APPROXIMATE RATE OF DISCHARGE-CIPM
HYDRAULIC PRESSURE-PSI	0	79	88	98	
	1,000				
	3,000	65	74	79	
	4,000				
	5,000				
	6,000	55	65	70	
	8,000				
	9,000	45	54	62	
	10,000				
	12,500	26	45	52	
	15,000	0	38	48	
	20,000		0	36	
	25,000			0	
	30,000				
	40,000				
	50,000				

# AZ-2 MODEL PUMP / PARTS LIST

## EXPLODED VIEW OF AIR MOTOR

P-2-113

