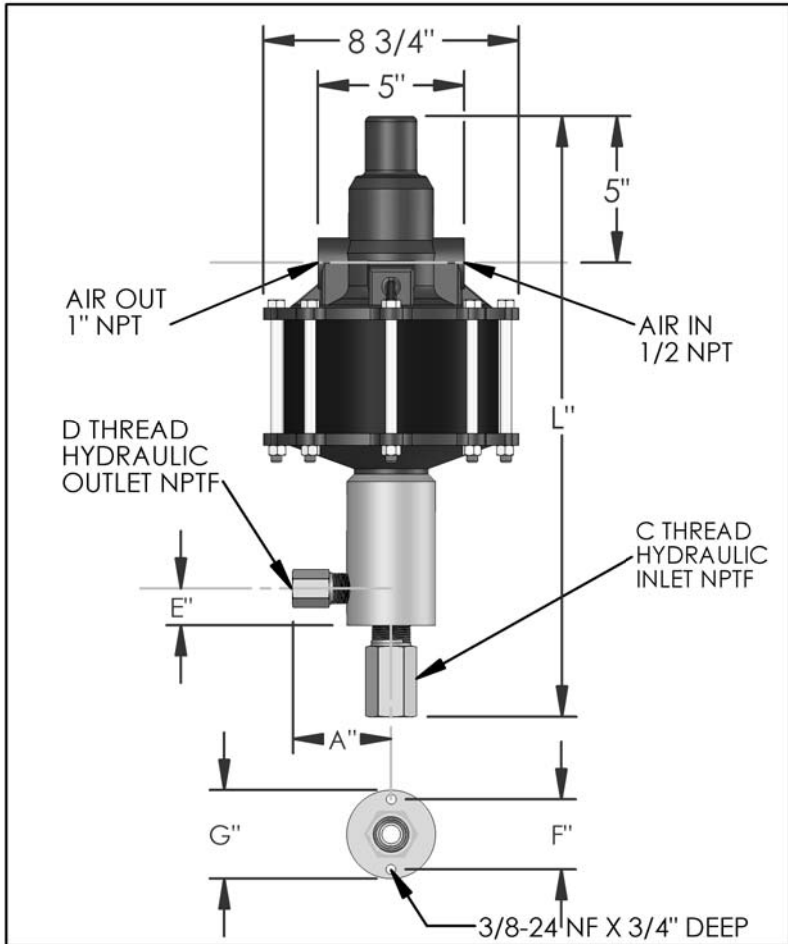


PARTS LIST FOR AZ-2-21B

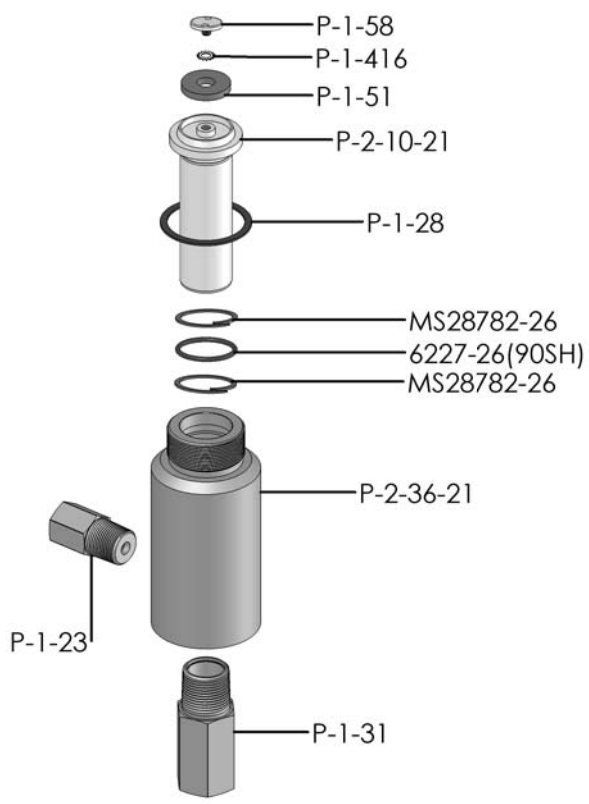


DIMENSIONS (ins./mm)							
L	A	B	C	D	E	F	G
20-9/16	3	N/A	1"	1/2	1-1/4	2-3/8	3
522	76	N/A			32	60	76

HYD. PISTON DIA. (ins.)	1.438
HYD. PISTON AREA (ins.)	1.6241
VOLUME PER STROKE (ci.)	4.06

Pump may be mounted in any position. (vertical Preferred) if mounted in an inverted position, drill a 1/16" hole in head or install a drain cock to release any fluid that may accumulate.

AIR PRESSURE-PSI	10	20	30	40	50	60	70	80	90	100	110
HYDRAULIC PRESSURE-PSI	165	425	650	875	1,075	1,300	1,550	1,750	1,950	2,150	2,350



EXPLODED VIEW OF HYDRAULIC ASSEMBLY

AIR PSI		60	80	100	APPROXIMATE RATE OF DISCHARGE-CIPM
HYDRAULIC PRESSURE-PSI	0	825	915	976	
	250	732	842	854	
	500	610	708	810	
	750	512	647	683	
	1,000	372	537	622	
	1,250	128	445	529	
	1,500	0	327	476	
	1,750		56	361	
	2,000		0	223	
	2,500			0	
	3,000				
	3,500				
	4,000				
	4,500				
	5,000				
	6,000				

AZ-2 MODEL PUMP / PARTS LIST

EXPLODED VIEW OF AIR MOTOR

P-2-113

