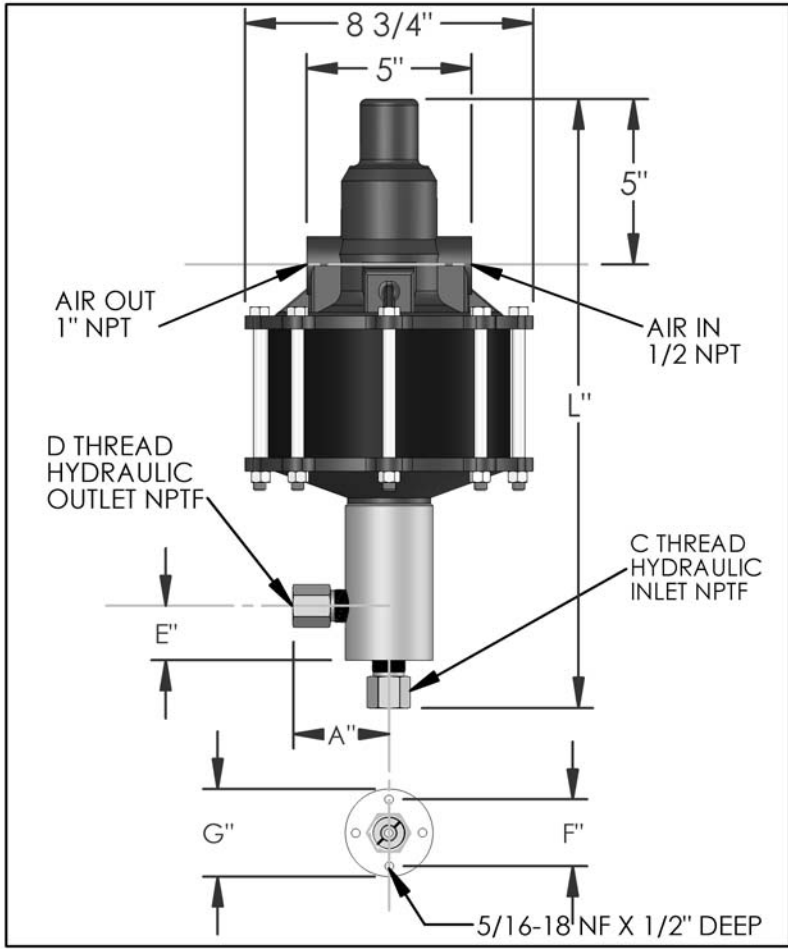


# PARTS LIST FOR AZ-2-180B

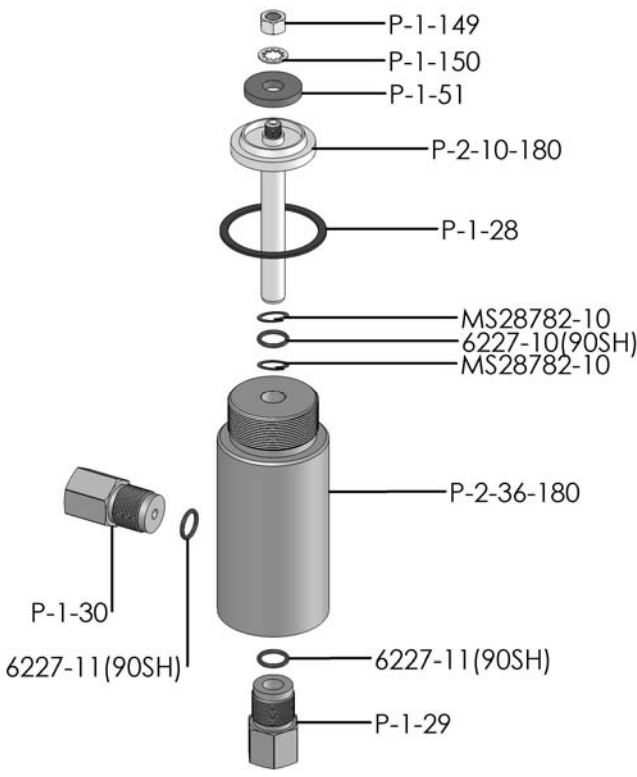


DIMENSIONS (ins./mm)							
L	A	B	C	D	E	F	G
17-13/16	2-1/2	N/A	3/8	3/8	1-5/8	1-3/4	2-1/2
452	64	N/A			41	44	64

HYD. PISTON DIA. (ins.)	0.500
HYD. PISTON AREA (ins.)	0.1964
VOLUME PER STROKE (ci.)	0.491

Pump may be mounted in any position. (vertical Preferred) if mounted in an inverted position, drill a 1/16" hole in head or install a drain cock to release any fluid that may accumulate.

AIR PRESSURE-PSI	10	20	30	40	50	60	70	80	90	100	110
HYDRAULIC PRESSURE-PSI	1,500	3,200	5,200	7,100	9,000	10,800	12,500	14,500	16,300	18,000	19,800



EXPLODED VIEW OF HYDRAULIC ASSEMBLY

AIR PSI		60	80	100	APPROXIMATE RATE OF DISCHARGE-CIPM
HYDRAULIC PRESSURE-PSI	0	101	122	128	
	2,000				
	2,500	77	92	98	
	3,000				
	3,500				
	4,000				
	4,500				
	5,000	64	77	85	
	6,000				
	7,000				
	8,000	47	63	73	
	9,000				
	10,000	27	52	64	
	12,500	0	38	54	
	15,000		0	46	
	20,000			0	

# AZ-2 MODEL PUMP / PARTS LIST

## EXPLODED VIEW OF AIR MOTOR

P-2-113

