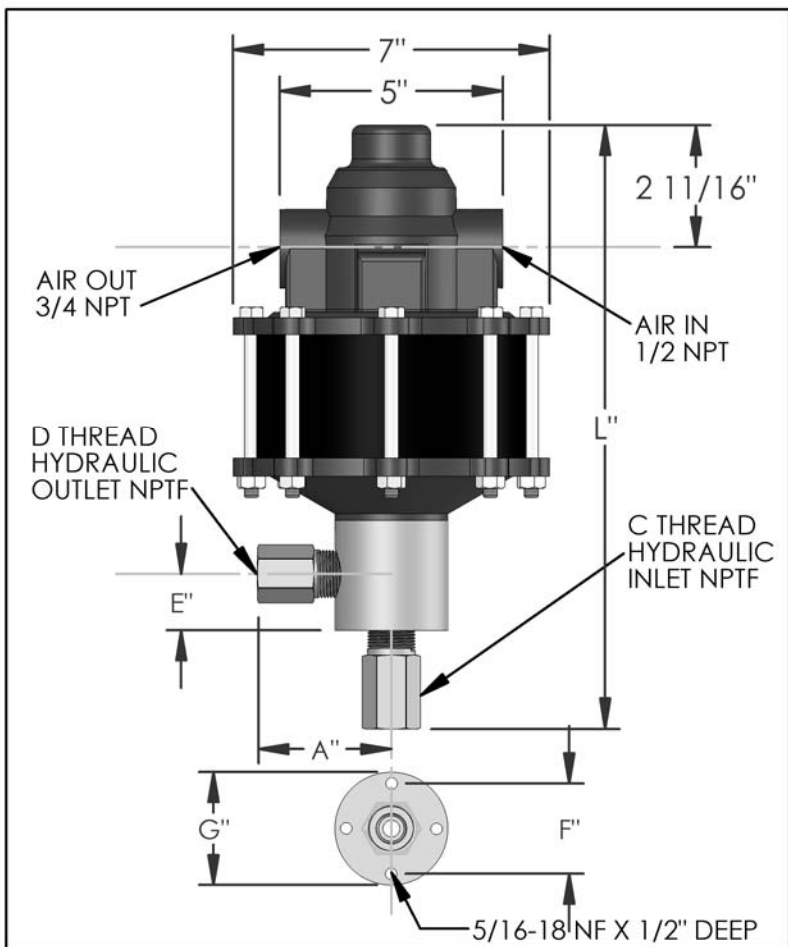


PARTS LIST FOR AZ-1-86B

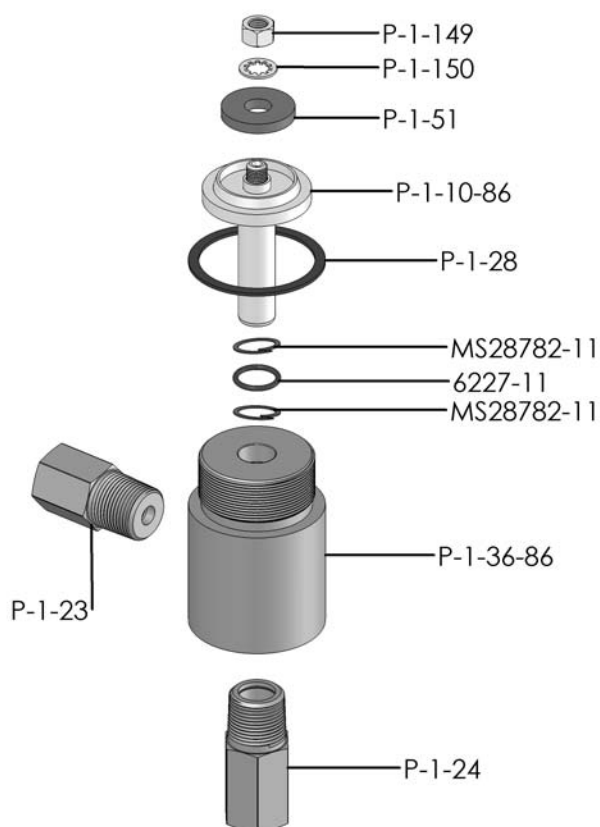


DIMENSIONS (ins./mm)							
L	A	B	C	D	E	F	G
13-1/2	3	N/A	1/2	1/2	7/8	1-3/4	2-1/2
343	76	N/A			22	44	64

HYD. PISTON DIA. (ins.)	0.563
HYD. PISTON AREA (ins.)	0.2489
VOLUME PER STROKE (ci.)	.31

Pump may be mounted in any position. (vertical Preferred) if mounted in an inverted position, drill a 1/16" hole in head or install a drain cock to release any fluid that may accumulate.

AIR PRESSURE-PSI	10	20	30	40	50	60	70	80	90	100
HYDRAULIC PRESSURE-PSI	800	1,700	2,600	3,400	4,400	5,100	6,000	6,900	7,800	8,600



EXPLODED VIEW OF HYDRAULIC ASSEMBLY

HYDRAULIC PRESSURE-PSI	AIR PSI			APPROXIMATE RATE OF DISCHARGE-CIPM
	60	80	100	
0	115	160	185	
1,000				
1,250				
1,500				
1,750				
2,000	80	87	93	
2,500				
3,000	68	77	83	
3,500				
4,000	49	62	73	
4,500	35	59	70	
5,000	0	56	65	
6,000		42	59	
7,000		0	49	
8,000			29	
9,000			0	

AZ-1 MODEL PUMP / PARTS LIST

EXPLODED VIEW OF AIR MOTOR

P-1-113

