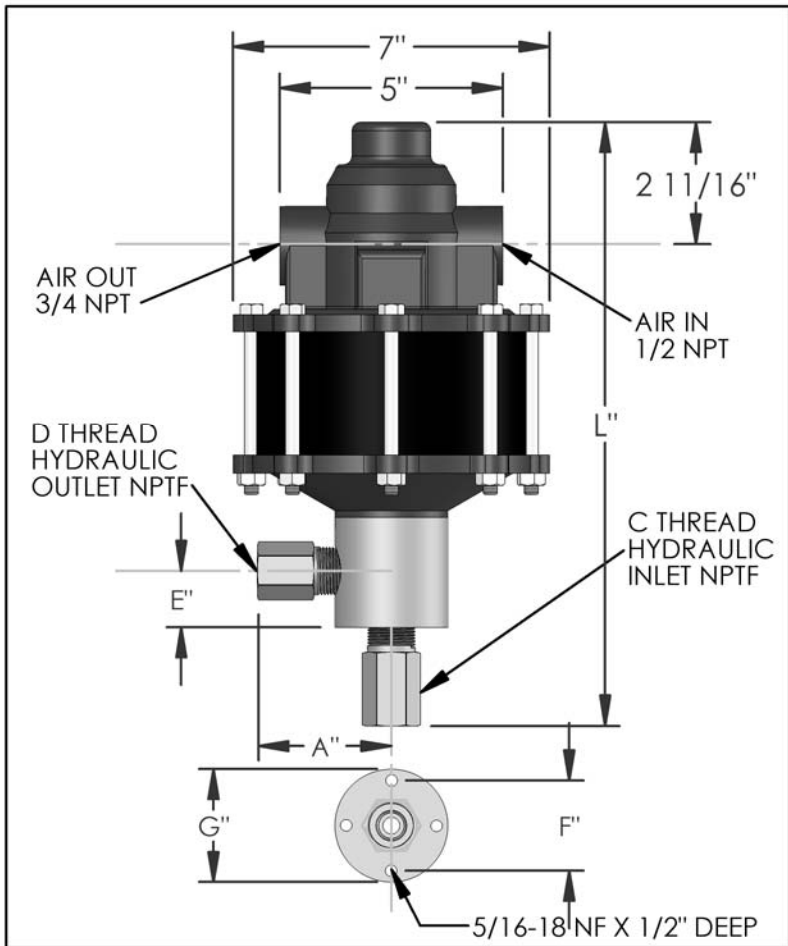


PARTS LIST FOR AZ-1-70B

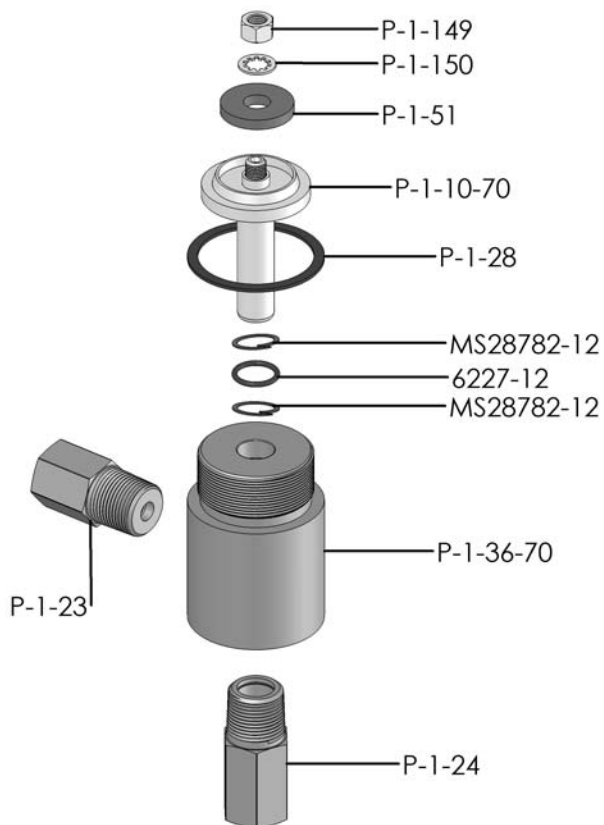


DIMENSIONS (ins./mm)							
L	A	B	C	D	E	F	G
13-1/2	3	N/A	1/2	1/2	7/8	1-3/4	2-1/2
343	76	N/A			22	44	64

HYD. PISTON DIA. (ins.)	0.625
HYD. PISTON AREA (ins.)	0.3068
VOLUME PER STROKE (ci.)	0.3835

Pump may be mounted in any position. (vertical Preferred) if mounted in an inverted position, drill a 1/16" hole in head or install a drain cock to release any fluid that may accumulate.

AIR PRESSURE-PSI	10	20	30	40	50	60	70	80	90	100
HYDRAULIC PRESSURE-PSI	500	1,175	1,950	2,600	3,350	4,100	4,900	5,600	6,350	7,000



HYDRAULIC PRESSURE-PSI	AIR PSI			APPROXIMATE RATE OF DISCHARGE-CIPM
	60	80	100	
0	143	156	181	
500				
750				
1,000	99	116	128	
1,250				
1,500				
1,750				
2,000	82	105	113	
2,500				
3,000	70	88	98	
3,500				
4,000	35	74	89	
4,500	0	52	79	
5,000		34	76	
6,000		0	57	
7,000			0	

EXPLODED VIEW OF HYDRAULIC ASSEMBLY

AZ-1 MODEL PUMP / PARTS LIST

EXPLODED VIEW OF AIR MOTOR

P-1-113

