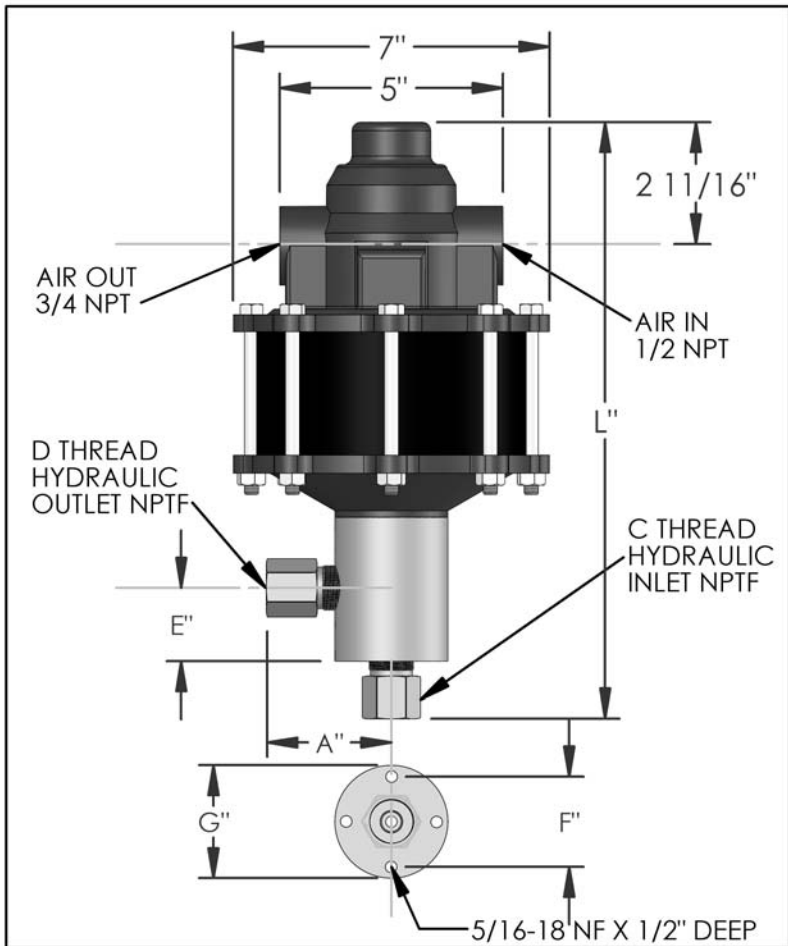


PARTS LIST FOR AZ-1-425B

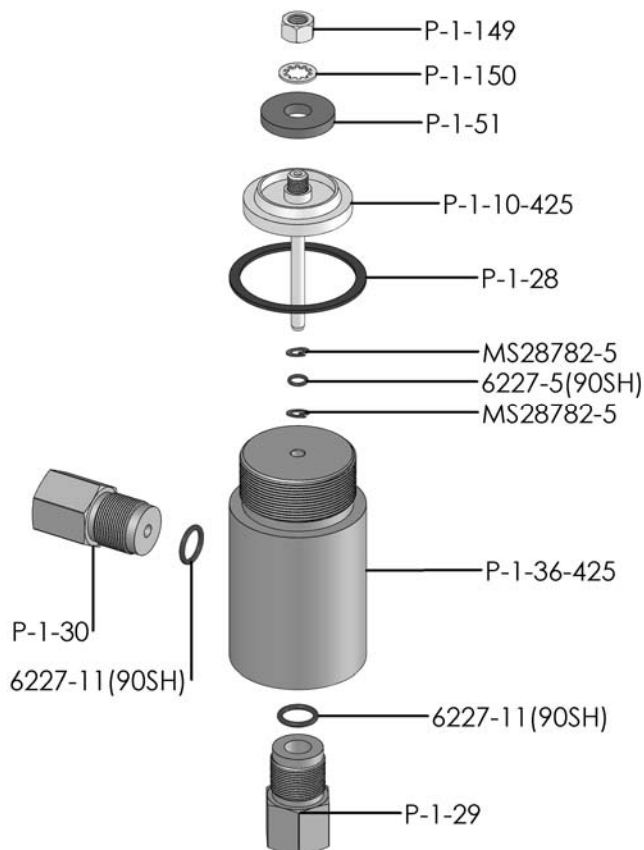


DIMENSIONS (ins./mm)							
L	A	B	C	D	E	F	G
13-1/16	2-1/2	N/A	3/8	3/8	7/8	1-3/4	2-1/2
332	64	N/A			22	44	64

HYD. PISTON DIA. (ins.)	0.250
HYD. PISTON AREA (ins.)	0.0491
VOLUME PER STROKE (ci.)	0.061

Pump may be mounted in any position. (vertical Preferred) if mounted in an inverted position, drill a 1/16" hole in head or install a drain cock to release any fluid that may accumulate.

AIR PRESSURE-PSI	10	20	30	40	50	60	70	80	90	100
HYDRAULIC PRESSURE-PSI	5,000	8,000	12,500	16,500	21,000	25,500	30,000	34,000	38,000	42,500



AIR PSI		60	80	100
HYDRAULIC PRESSURE-PSI	0	79	86	92
	1,000			
	2,000	50	57	61
	5,000			
	6,000			
	7,000			
	8,000	41	51	56
	9,000			
	10,000			
	12,500	33	42	50
	15,000			
	20,000	17	35	43
	25,000			
	30,000	0	23	37
	40,000		0	29
50,000			0	

APPROXIMATE RATE OF DISCHARGE-CIPM

EXPLODED VIEW OF HYDRAULIC ASSEMBLY

AZ-1 MODEL PUMP / PARTS LIST

EXPLODED VIEW OF AIR MOTOR

P-1-113

