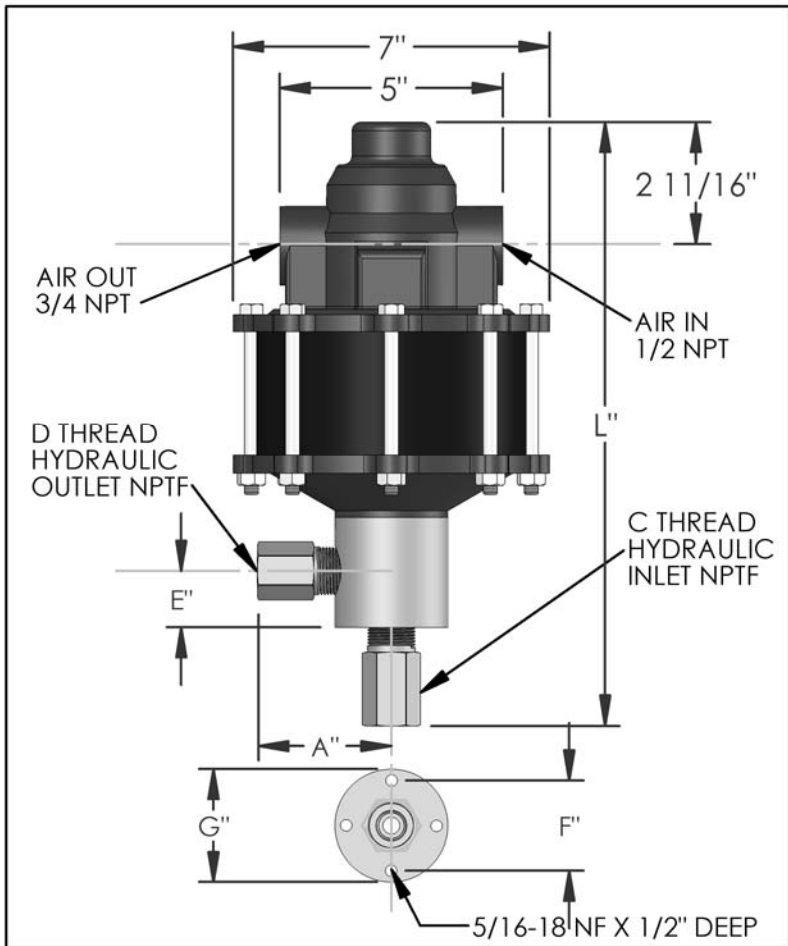


# PARTS LIST FOR AZ-1-36B

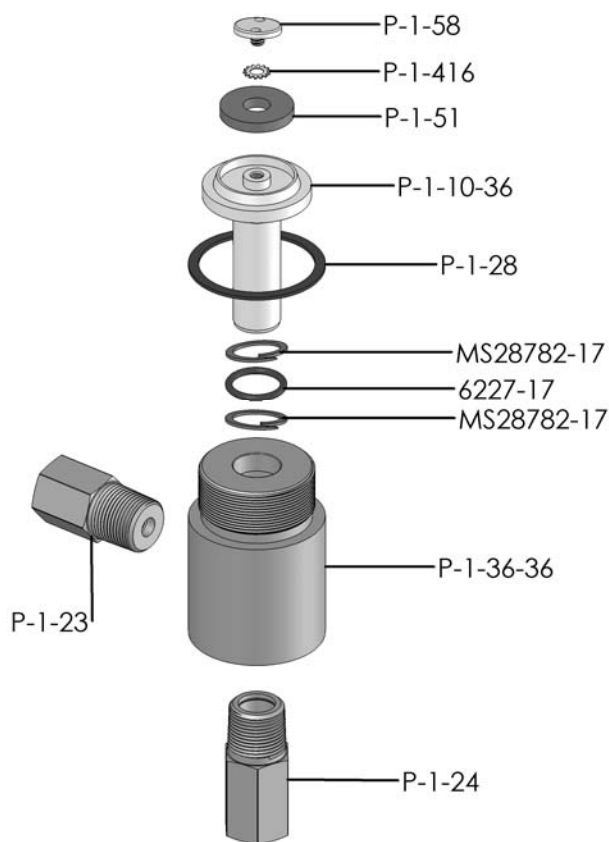


DIMENSIONS (ins./mm)							
L	A	B	C	D	E	F	G
13-1/2	2-7/8	N/A	1/2	1/2	1-1/4	2	2-1/2
343	73	N/A			32	51	64

HYD. PISTON DIA. (ins.)	0.875
HYD. PISTON AREA (ins.)	0.6013
VOLUME PER STROKE (ci.)	0.752

Pump may be mounted in any position. (vertical Preferred) if mounted in an inverted position, drill a 1/16" hole in head or install a drain cock to release any fluid that may accumulate.

AIR PRESSURE-PSI	10	20	30	40	50	60	70	80	90	100
HYDRAULIC PRESSURE-PSI	250	600	1,000	1,400	1,775	2,125	2,475	2,825	3,200	3,625



AIR PSI		60	80	100	APPROXIMATE RATE OF DISCHARGE-CIPM
HYDRAULIC PRESSURE-PSI	0	253	311	366	
	250				
	500	207	240	268	
	750				
	1,000	168	201	232	
	1,250				
	1,500	134	174	204	
	1,750				
	2,000	73	146	183	
	2,500	0	104	156	
	3,000		0	119	
	3,500			73	
	4,000			0	
	4,500				
	5,000				
	6,000				

EXPLODED VIEW OF HYDRAULIC ASSEMBLY

# AZ-1 MODEL PUMP / PARTS LIST

## EXPLODED VIEW OF AIR MOTOR

### P-1-113

