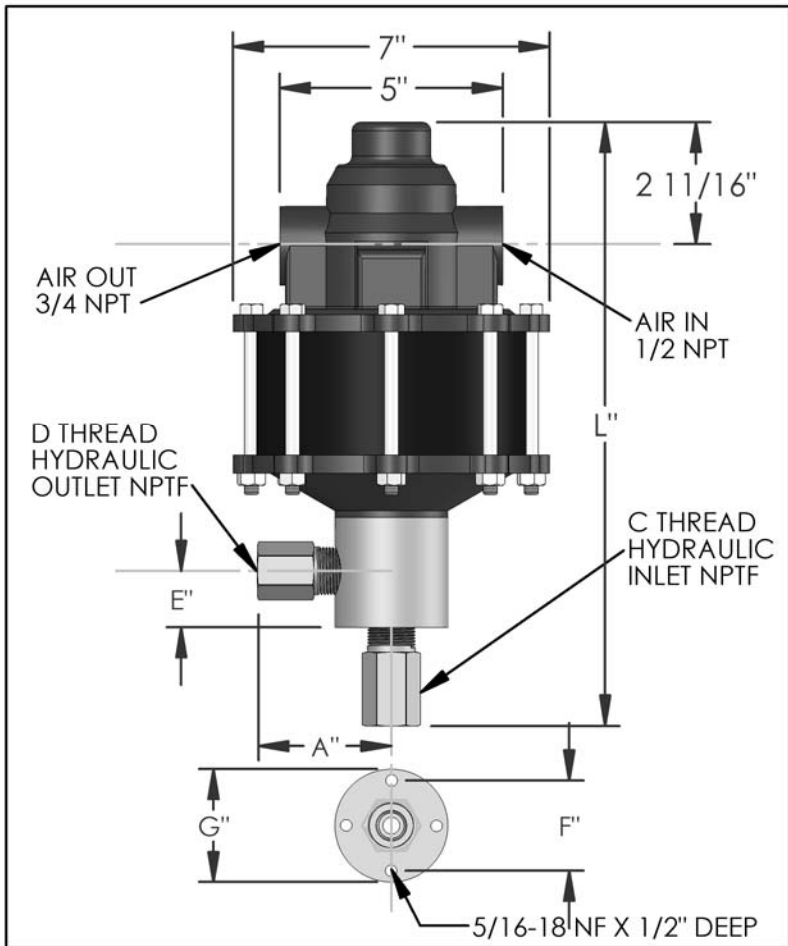


# PARTS LIST FOR AZ-1-30B

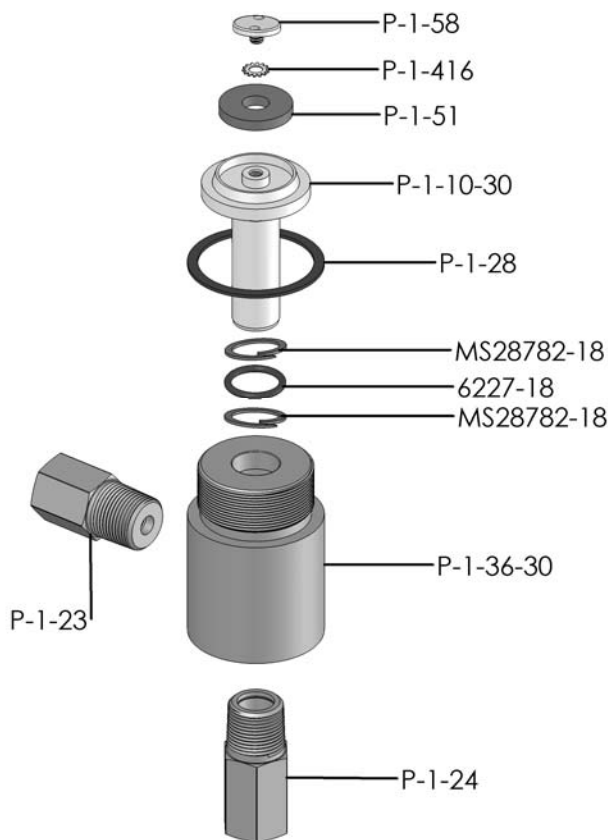


DIMENSIONS (ins./mm)							
L	A	B	C	D	E	F	G
13-1/2	2-7/8	N/A	1/2	1/2	1-1/4	2	2-1/2
343	73	N/A			32	51	64

HYD. PISTON DIA. (ins.)	0.938
HYD. PISTON AREA (ins.)	0.691
VOLUME PER STROKE (ci.)	0.864

Pump may be mounted in any position. (vertical Preferred) if mounted in an inverted position, drill a 1/16" hole in head or install a drain cock to release any fluid that may accumulate.

AIR PRESSURE-PSI	10	20	30	40	50	60	70	80	90	100
HYDRAULIC PRESSURE-PSI	225	525	875	1,150	1,500	1,775	2,050	2,350	2,700	3,075



AIR PSI		60	80	100
HYDRAULIC PRESSURE-PSI	0	305	390	445
	250			
	500	235	277	311
	750			
	1,000	183	220	268
	1,250			
	1,500	131	183	223
	1,750	49	165	204
	2,000	0	140	189
	2,500		0	143
	3,000			31
	3,500			0
	4,000			
	4,500			
	5,000			
6,000				
APPROXIMATE RATE OF DISCHARGE-CIPM				

EXPLODED VIEW OF HYDRAULIC ASSEMBLY

# AZ-1 MODEL PUMP / PARTS LIST

## EXPLODED VIEW OF AIR MOTOR

### P-1-113

