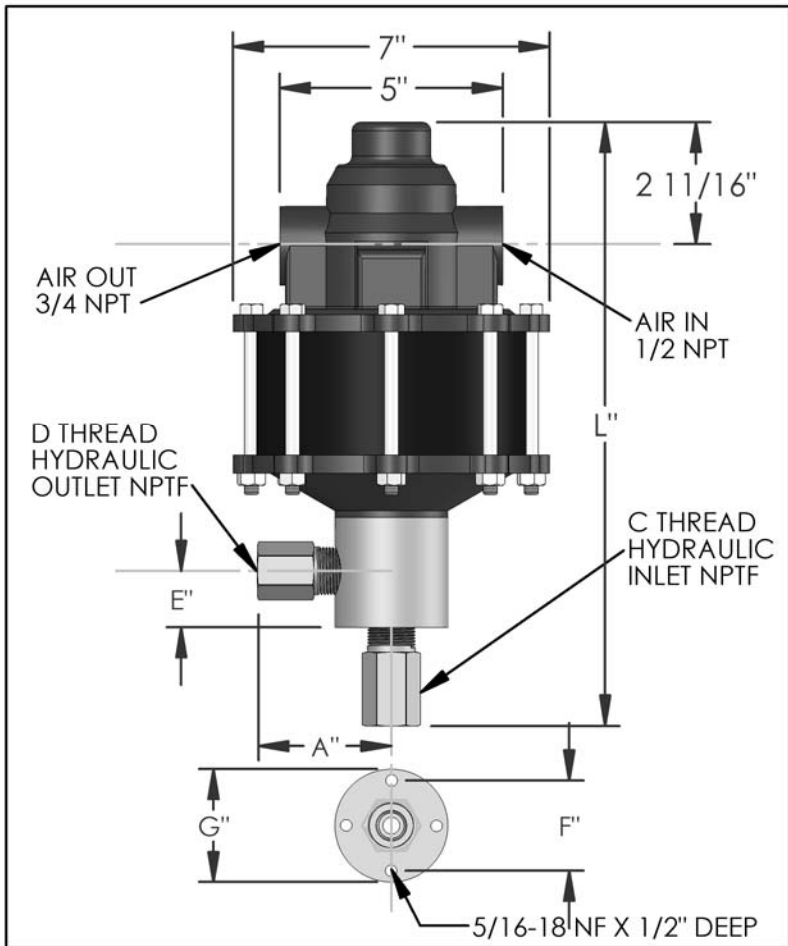


PARTS LIST FOR AZ-1-26B

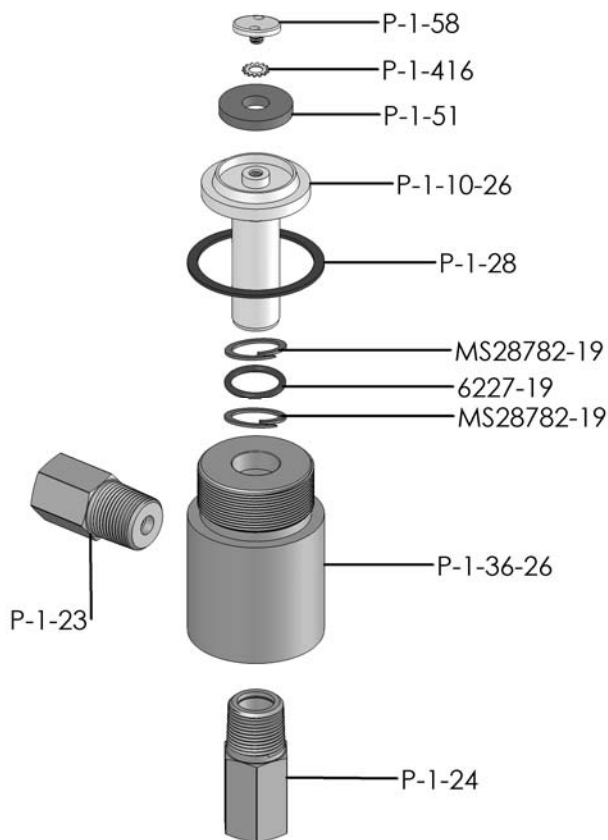


DIMENSIONS (ins./mm)							
L	A	B	C	D	E	F	G
13-1/2	2-7/8	N/A	1/2	1/2	1-1/4	2	2-1/2
343	73	N/A			32	51	64

HYD. PISTON DIA. (ins.)	1.000
HYD. PISTON AREA (ins.)	0.7854
VOLUME PER STROKE (ci.)	0.982

Pump may be mounted in any position. (vertical Preferred) if mounted in an inverted position, drill a 1/16" hole in head or install a drain cock to release any fluid that may accumulate.

AIR PRESSURE-PSI	10	20	30	40	50	60	70	80	90	100
HYDRAULIC PRESSURE-PSI	200	475	750	1,000	1,300	1,550	1,800	2,000	2,350	2,625



HYDRAULIC PRESSURE-PSI	AIR PSI	60	80	100	APPROXIMATE RATE OF DISCHARGE-CIPM
	0	361	445	537	
250					
500	259	318	357		
750					
1,000	201	253	288		
1,250					
1,500	85	186	238		
1,750	0	149	210		
2,000		88	183		
2,500		0	74		
3,000			0		
3,500					
4,000					
4,500					
5,000					
6,000					

EXPLODED VIEW OF HYDRAULIC ASSEMBLY

AZ-1 MODEL PUMP / PARTS LIST

EXPLODED VIEW OF AIR MOTOR

P-1-113

