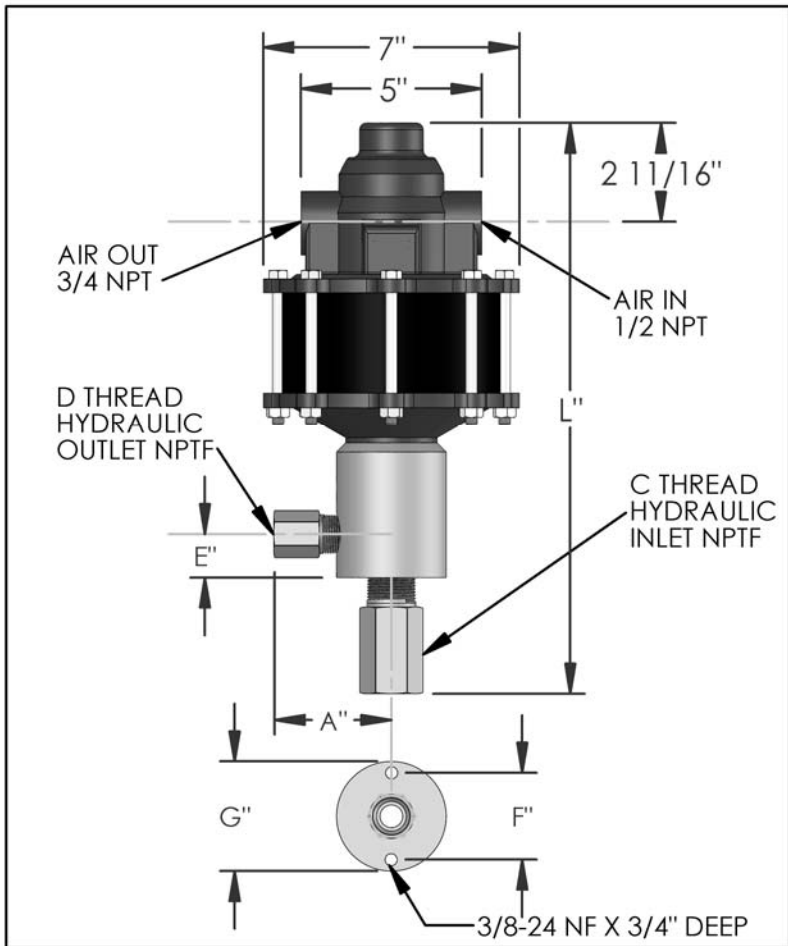


# PARTS LIST FOR AZ-1-19B

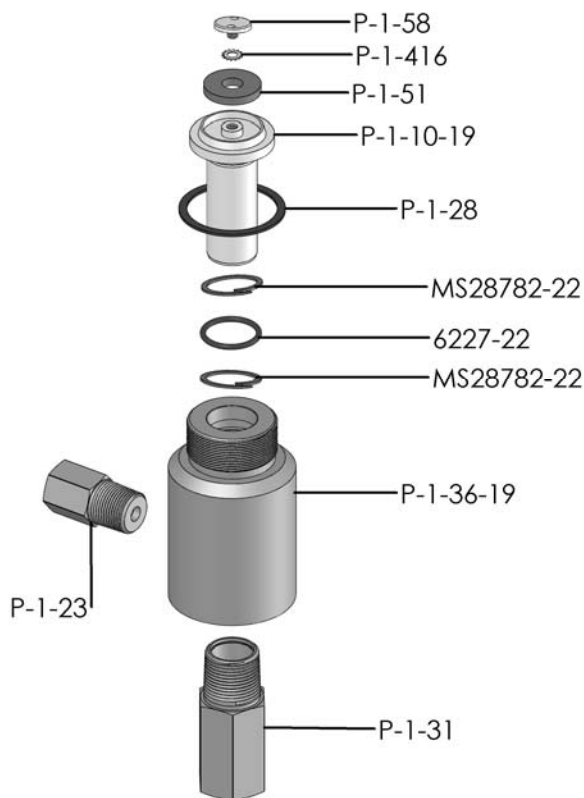


DIMENSIONS (ins./mm)							
L	A	B	C	D	E	F	G
15-13/16	3-5/16	N/A	1	1/2	1-3/16	2-3/8	3
402	84	N/A			30	60	76

HYD. PISTON DIA. (ins.)	1.188
HYD. PISTON AREA (ins.)	1.1085
VOLUME PER STROKE (ci.)	1.384

Pump may be mounted in any position. (vertical Preferred) if mounted in an inverted position, drill a 1/16" hole in head or install a drain cock to release any fluid that may accumulate.

AIR PRESSURE-PSI	10	20	30	40	50	60	70	80	90	100
HYDRAULIC PRESSURE-PSI	145	330	525	700	925	1,100	1,300	1,500	1,700	1,900



HYDRAULIC PRESSURE-PSI	AIR PSI	60	80	100	APPROXIMATE RATE OF DISCHARGE-CIPM
	0	561	659	708	
250	403	488	549		
500	336	409	476		
750	278	357	403		
1,000	180	270	354		
1,250	0	223	305		
1,500		63	256		
1,750		0	153		
2,000			0		
2,500					
3,000					
3,500					
4,000					
4,500					
5,000					
6,000					

EXPLODED VIEW OF HYDRAULIC ASSEMBLY

# AZ-1 MODEL PUMP / PARTS LIST

## EXPLODED VIEW OF AIR MOTOR

### P-1-113

