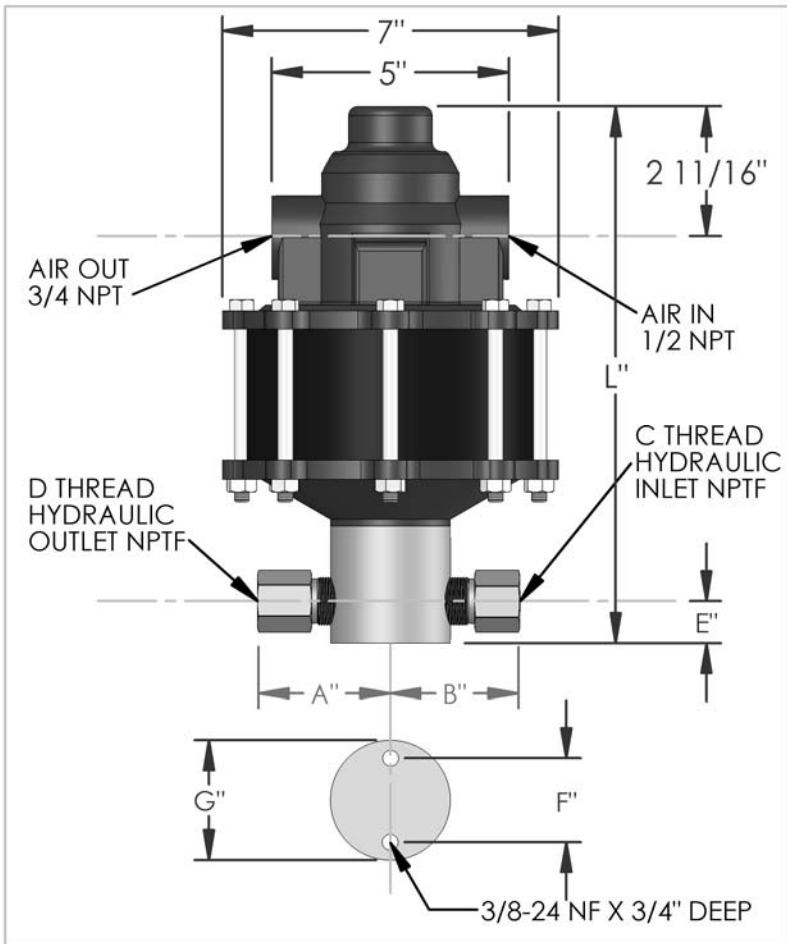


PARTS LIST FOR AZ-1-187LPS

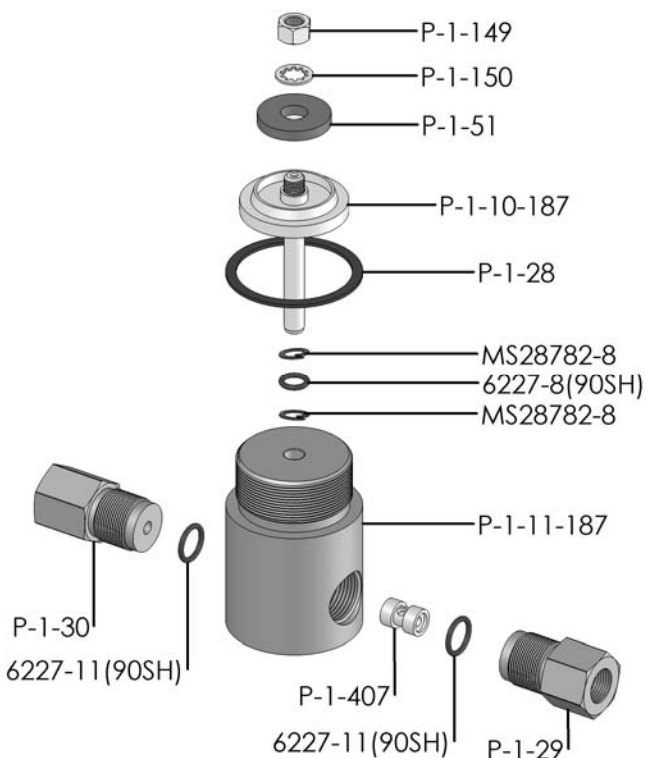


DIMENSIONS (ins./mm)							
L	A	B	C	D	E	F	G
11-1/4	2-1/2	2-5/16	3/8	3/8	7/8	1-3/4	2-1/2
286	64	59			22	44	64

HYD. PISTON DIA. (ins.)	0.375
HYD. PISTON AREA (ins.)	0.1104
VOLUME PER STROKE (ci.)	0.138

Pump may be mounted in any position. (vertical Preferred) if mounted in an inverted position, drill a 1/16" hole in head or install a drain cock to release any fluid that may accumulate.

AIR PRESSURE-PSI	10	20	30	40	50	60	70	80	90	100
HYDRAULIC PRESSURE-PSI	1,400	3,250	5,250	7,250	9,250	11,250	13,250	15,000	17,000	18,750



EXPLODED VIEW OF HYDRAULIC ASSEMBLY

AIR PSI		60	80	100	APPROXIMATE RATE OF DISCHARGE-CIPM
HYDRAULIC PRESSURE-PSI	0	52	62	70	
	2,000				
	2,500	37	40	46	
	3,000				
	3,500				
	4,000				
	4,500				
	5,000	31	37	41	
	6,000				
	7,000				
	8,000	24	31	36	
	9,000				
	10,000	18	27	32	
	12,500		23	28	
15,000		3	24		
20,000			0		

AZ-1 MODEL PUMP / PARTS LIST

EXPLODED VIEW OF AIR MOTOR

P-1-113LPS

