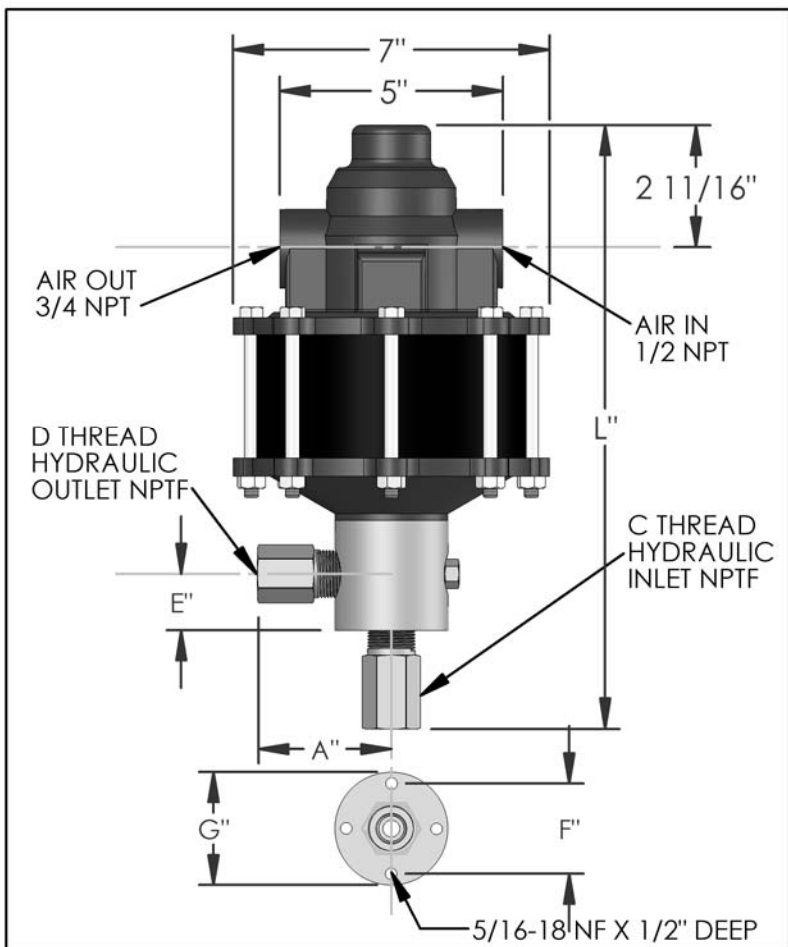


PARTS LIST FOR AZ-1-107B-MAL

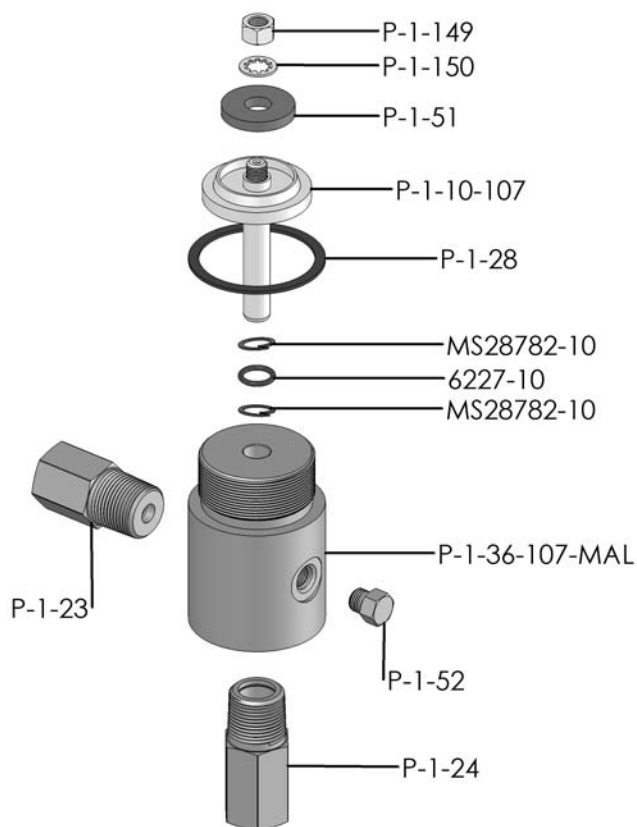


DIMENSIONS (ins./mm)							
L	A	B	C	D	E	F	G
13-1/2	2-7/8	N/A	1/2	1/2	1-1/4	2	2-1/2
343	73	N/A			32	51	64

HYD. PISTON DIA. (ins.)	0.500
HYD. PISTON AREA (ins.)	0.1963
VOLUME PER STROKE (ci.)	0.245

Pump may be mounted in any position. (vertical Preferred) if mounted in an inverted position, drill a 1/16" hole in head or install a drain cock to release any fluid that may accumulate.

AIR PRESSURE-PSI	10	20	30	40	50	60	70	80	90	100
HYDRAULIC PRESSURE-PSI	900	2,000	3,150	4,200	5,400	6,400	7,450	8,500	9,700	10,700



HYDRAULIC PRESSURE-PSI	AIR PSI			APPROXIMATE RATE OF DISCHARGE-CIPM
	60	80	100	
0	95	110	120	
1,000	69	74	78	
1,500				
2,000	61	68	74	
2,500				
3,000	53	63	71	
3,500				
4,000	46	58	62	
4,500				
5,000				
6,000	26	45	54	
7,000	0			
8,000		28	44	
9,000		0	38	
10,000			27	
12,500			0	

EXPLODED VIEW OF HYDRAULIC ASSEMBLY

AZ-1 MODEL PUMP / PARTS LIST

EXPLODED VIEW OF AIR MOTOR

P-1-113

